

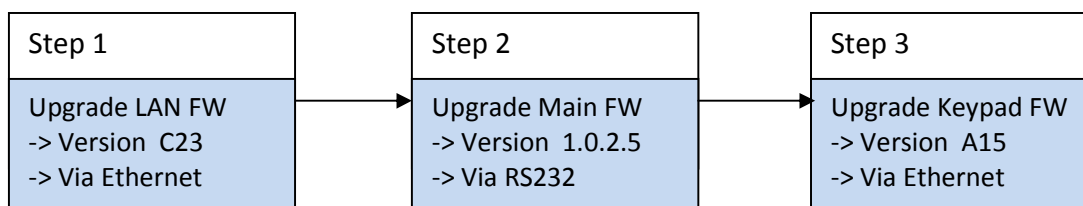
UPGRADE INSTRUCTIONS

ESeries Software version 1.0.2.5

Applies to the following projectors

- DHD670-E and DWU670-E

1. The entire upgrade will take approximately 30 minutes.
2. A power cycle will be required (Unplugging and plugging the power cord).
3. Two cables are required for the upgrade:
 - LAN cable (RJ45)
 - "Cross over" female-female RS232 cable
4. It is recommended to use a computer/laptop with **Windows XP and Internet Explorer 7**, with automatic screensavers and screen timeouts disabled.
5. The projector firmware consists of three components. Ensure the correct files are used for the model of projector (WUXGA or HD):
 - **Web FW C23 (Must be done first)** – via Ethernet port). Files are:
 - DHD670-E_C23.bin
 - DWU670-E_C23.bin
 - **Main FW V1025** (via RS232 port). Files are:
 - Christie DHD670-E V1025 RS232 Upgrade Wizard.msi (for RS232 upgrade)
 - Christie DWU670-E V1025 RS232 Upgrade Wizard.msi (for RS232 upgrade)
 - **Keypad FW A15** (via Ethernet port – only necessary on older projectors). File is:
 - Christie A15 Keypad FW Update Wizard.msi



** New LAN FW will reset IP settings to default configuration:
Static IP : 192.168.0.100

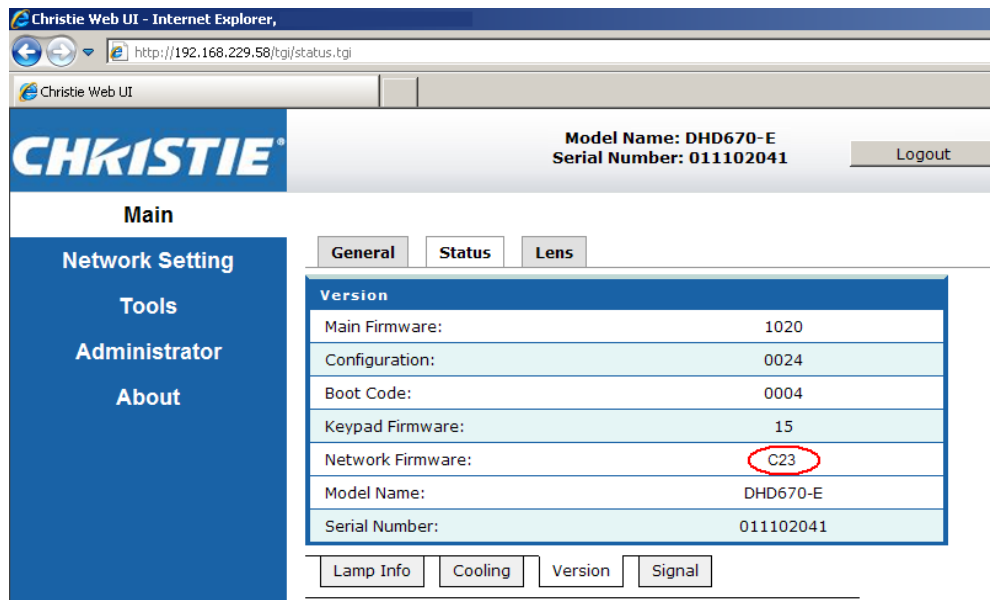
Update 1 - Update Web firmware

** NOTE: This upgrade must be done first, before the Main FW upgrade.

An Ethernet connection is required between the computer and projector.

If the web version is already at C23, it is not necessary to upgrade it again.

Check the current installed version on the projector's web page shown below:

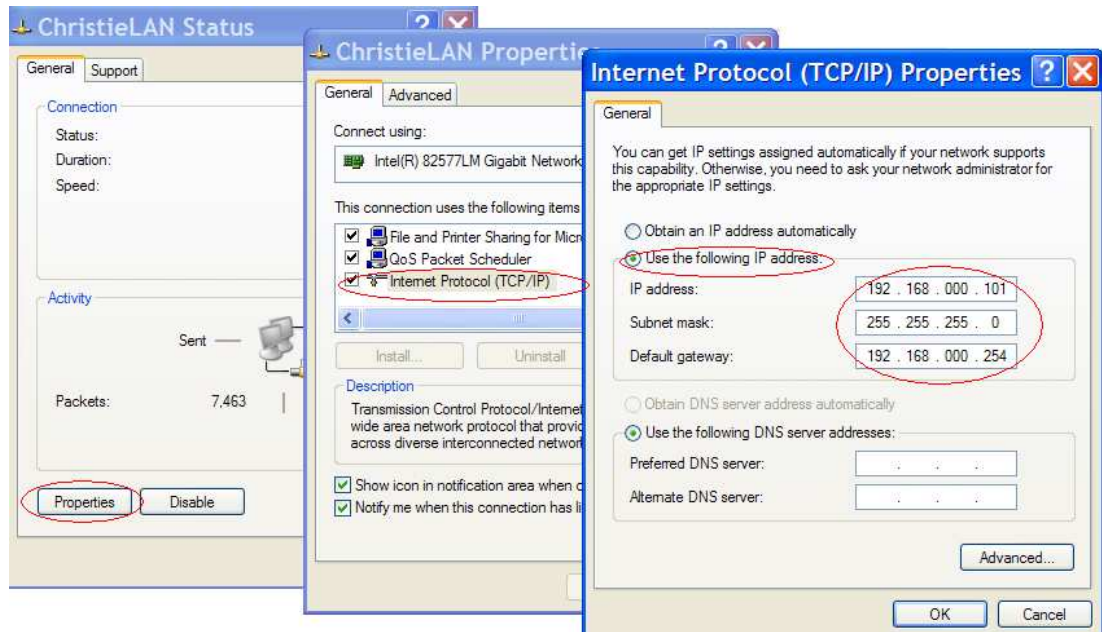


1. In the projector's menu Configuration->Communications->Network:
 - Deselect DHCP (switch it off)
 - Wait approximately 45 seconds for the Network Settings to take effect (i.e. until the menu settings are no longer grayed out)

Network	
1. DHCP	<input type="checkbox"/>
2. IP Address	192 . 168 . 0 . 100
3. Subnet Mask	255 . 255 . 255 . 0
4. Default Gateway	192 . 168 . 0 . 254

2. Connect the projector and the PC.
 - A direct RJ45 connection is recommended.
 - If the connection is through a switch or router, ensure that there are no duplicate IP addresses for any equipment connected via the switch.

- Default settings that work are: (Other settings may be used)
 - Projector IP address 192.168.0.100
 - Computer IP address 192.168.0.101
 - Subnet Mask on both 255.255.255.0

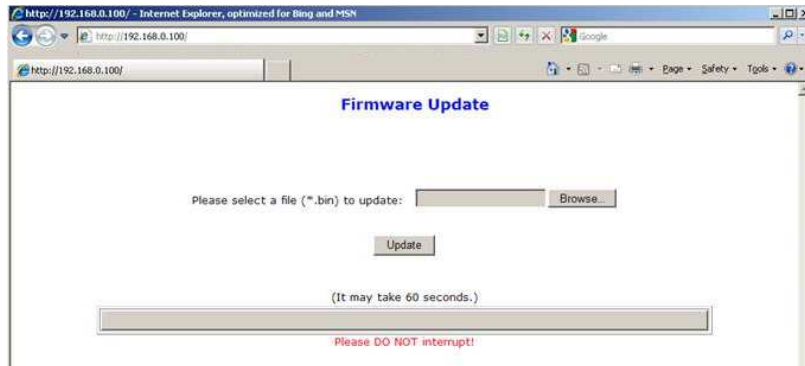


3. Open Internet Explorer. Connect to the firmware update web page at the following address:
<http://192.168.0.100/tgi/fu.tgi>



4. After 2 seconds, press the button to enter firmware update mode.

- Click the “Browse” button and select the correct file to match the projector model:
DHD670-E_C23.bin or **DWU670-E_C23.bin**



- Click “Update” to start the LAN firmware update.

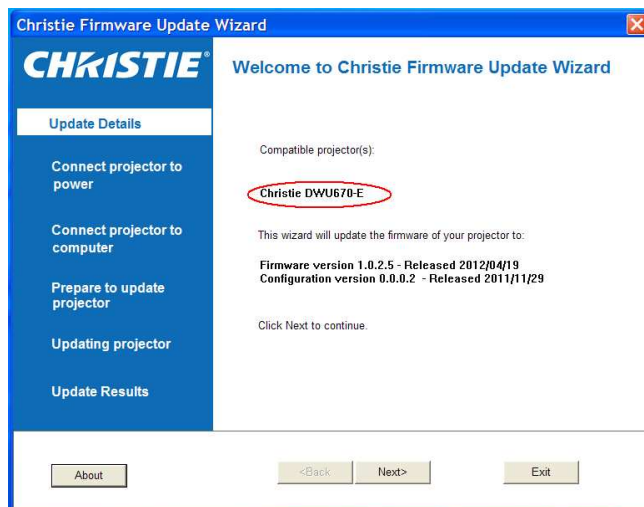
The LAN FW update should be completed in approximately 2 minutes.

- After the Web update has finished, you may begin the Main Firmware upgrade.

Update 2 - Update Main firmware

**** NOTE:** This upgrade must be done second, after the Web FW upgrade.
An RS232 connection is required between the computer and projector.

- Open the applicable installation file to install the Upgrade wizard on your computer. The icon for the Upgrade Wizard will be installed on the computer’s desktop.
For the upgrade, choose the correct file icon for your projector model:
“**Christie DHD670-E V1025 Firmware RS232 Update Utility**” or
“**Christie DWU670-E V1025 Firmware RS232 Update Utility**”
- Start the Upgrade Wizard from the desktop icon and confirm it is the correct firmware for the projector model.



- Turn the projector on and wait until the Source message box is displayed on the bottom left of the image.
- For RS232:** Connect the computer to the projector with the RS232 cable.

If the computer's RS232 port is used, settings should be:

Baud Rate	115,200	Data Bits	8
Parity	None	Stop Bits	1
Flow Control	None		

**** NOTE:** Use direct connections from Laptops and Desktops, and do not use a docking station.

- Follow the instructions in the Upgrade Wizard and start the upgrade.

The Main FW update should be completed in approximately 15 minutes.

Update 3 - Update Keypad firmware

An Ethernet connection is required between the computer and projector.

If the keypad version is already at 15, it is not necessary to upgrade it again.

Check the current installed version on the projector's web page shown below:

The screenshot shows the Christie Web UI in Internet Explorer. The address bar shows <http://192.168.229.58/tgi/status.tgi>. The page header includes the Christie logo, Model Name: DHD670-E, Serial Number: 011102041, and a Logout button. The main content area has a left sidebar with links: Main, Network Setting, Tools, Administrator, and About. The top navigation bar has tabs: General, Status, and Lens. The Version page is active, displaying a table of firmware versions:

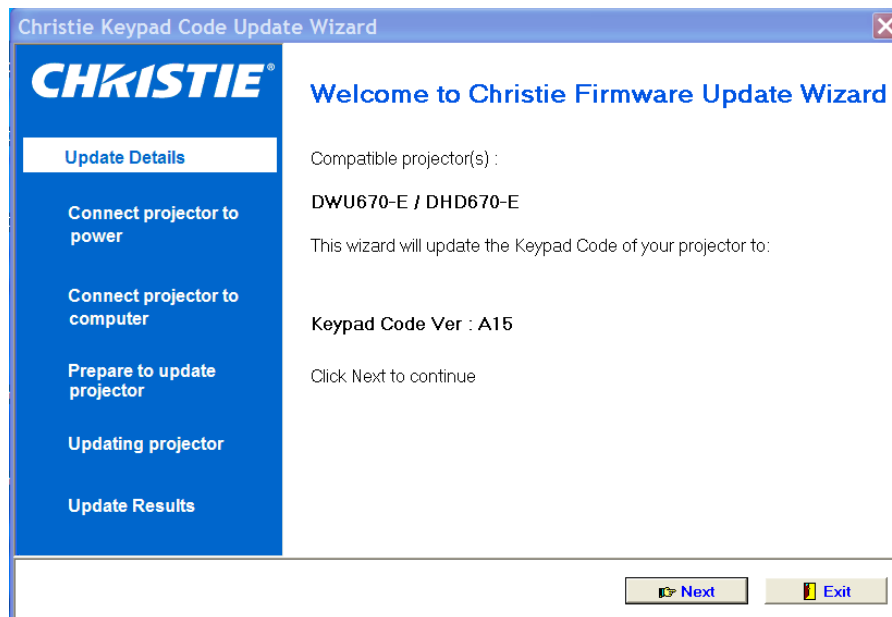
Version	
Main Firmware:	1025
Configuration:	0024
Boot Code:	0004
Keypad Firmware:	15
Network Firmware:	C23
Model Name:	DHD670-E
Serial Number:	011102041

Below the table are buttons for Lamp Info, Cooling, Version, and Signal.

- Open the applicable installation file to install the Upgrade wizard on your computer. The icon for the Upgrade Wizard will be installed on the computer's desktop.

"Christie A15 Keypad FW LAN Update Wizard"

2. Start the Upgrade Wizard from the desktop icon.



3. Turn the projector on and wait until the Source message box is displayed on the bottom left of the image.
4. Connect the computer to the projector with a direct RJ45 connection as in Update 1 above.
5. Follow the instructions in the Upgrade Wizard and click “Next” when applicable. Start the upgrade.

The Keypad FW update should be completed in approximately 2 minutes.

Update completion

6. After the upgrade has finished, the projector will return to Standby mode. Unplug the projector and plug it in again, then turn the projector on. The upgrade should be complete.

**** NOTE: Some projectors may require a few AC power cycles to return to normal mode. An indication that a power cycle is required is the keys on the built in keypad will all be lit and some may appear purple.**

Update confirmation

6. Login to the projector's web page and confirm that the versions are correct:

Main Firmware: 1025

Keypad Firmware: 15

Network Firmware: C23

The screenshot shows the Christie Web UI in an Internet Explorer browser. The address bar displays `http://192.168.229.58/tgi/status.tgi`. The page header includes the Christie logo, the model name **DHD670-E**, the serial number **011102041**, and a **Logout** button. A left sidebar contains navigation links: **Main**, **Network Setting**, **Tools**, **Administrator**, and **About**. The main content area has tabs for **General**, **Status**, and **Lens**. The **Status** tab is active, displaying a table titled **Version** with the following data:

Version	
Main Firmware:	1025
Configuration:	0024
Boot Code:	0004
Keypad Firmware:	15
Network Firmware:	C23
Model Name:	DHD670-E
Serial Number:	011102041

Below the table are additional tabs: **Lamp Info**, **Cooling**, **Version** (selected), and **Signal**.